

new art laboratories



**NADAL®**  
Medical rapid  
tests

## **Diagnostic aids for sexual health**

Important parameters for checkups and screenings



## nal von minden GmbH

### Your specialist for medical diagnostics!

#### **We help you care!**

For more than 40 years, our company has led the way with high-quality products and outstanding service. Through extensive consultation with our customers, we have optimised our portfolio and adapted it to current developments in the health market. Going forward, it is

our aim to remain the most innovative company in its field, and your first call for all questions on the topic of medical rapid tests. We don't only want to cover your needs, we want to inspire you too.

## Dear practice team,

Sexual health is reflected in physical, emotional, mental and social well-being. On the one hand, this requires respect for a person's sexual rights and a fundamentally positive approach. On the other hand, an awareness of health risks, especially surrounding sexually transmitted infections (STIs), also demonstrates a necessary sense of responsibility. It is therefore important to approach the topic of sexual health with openness and honesty. Only then can the return and spread of STIs be curbed. However, many people either don't know they have been infected or avoid paying a visit to their GP.

Tests can be useful in such cases, as they are easy to carry out and deliver results in just a few minutes. This enables immediate action and, above all, provides clarity.

### **NADAL® – always the right test!**

In the following pages, you will find a selection of important diagnostic aids for **sexual health**. It is our aim to support specialists across the board, not just when it comes to diagnosis but also prevention. In our **NADAL®** product catalogue and on our internet homepage [www.nal-vonminden.com](http://www.nal-vonminden.com), we can offer you a range of **medical rapid tests** for a wide range of needs.

**We help you care!** – with outstanding product quality, an excellent price-performance ratio, personal customer advisers and quick service.

We look forward to working with you!

Your nal von minden GmbH



Lukas Eder, CEO  
of nal von minden GmbH

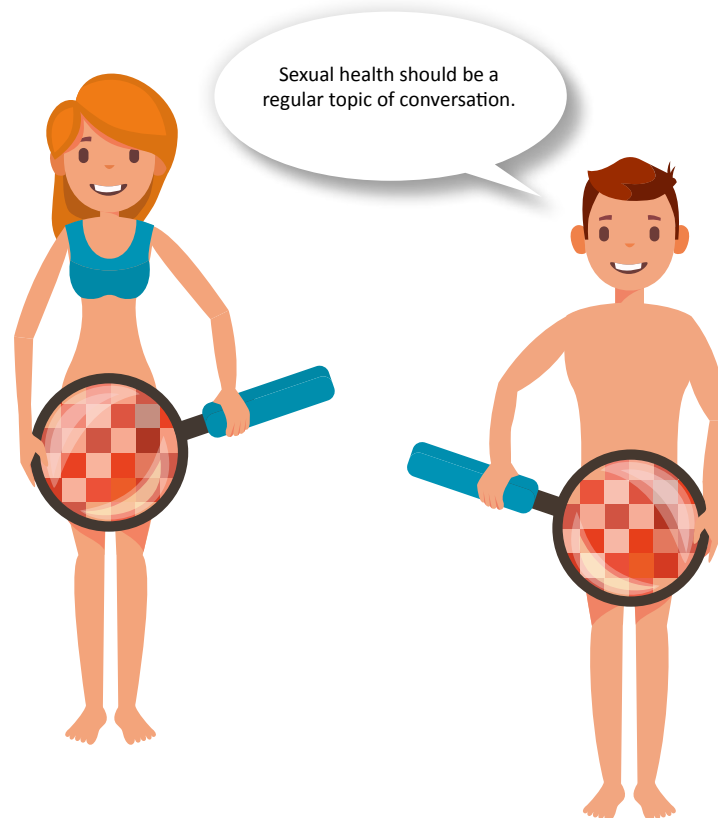
# Sexual health: More than just infections

## Overview of important parameters

At the time of the sexual revolution, now more than 50 years ago, voices were finally raised against the concealment and oppression of sexuality and all the questions that come with it. We have since taken decisive steps, but we are not yet at our goal. The fact that the topic of sexuality is still considered taboo in public can have potentially serious consequences: infertility, cancer, miscarriage or the vertical transmission of infections from mother to baby. Sexual health is of primary importance and must once again receive increased public attention against a

backdrop of rising infection rates worldwide. The World Health Organisation (WHO) estimates that, each year, over 350 million new infections occur – bearing in mind that these numbers only reflect reported cases.

We would like to do our part to raise awareness. It is a matter of the heart for us that our tests can deliver you and your patients clear results and facilitate the day-to-day running of your practice.



## Chlamydia

According to the WHO, infections of the urogenital tract caused by *Chlamydia trachomatis* are the second most common sexually transmitted infections worldwide. The reason for this is the high prevalence and transmission rate, as chlamydia infections are often asymptomatic.

Clarity in such cases can only be achieved through testing. The NADAL® Chlamydia plus Test is equipped with a transport tube, meaning sample collection and testing need not happen at the same location.

### NADAL® Chlamydia test cassette (CE0197)

For the qualitative detection of *Chlamydia trachomatis*

**Sample material:** Cervical swab (females);  
Urethral swab & urine (males)

**Test time:** 10 minutes

**Sensitivity (f/m):** 90.2 % / 92.6 %

**Specificity (f/m):** 96.0 % / 95.2 %

**Product code:** 212007



### NADAL® Chlamydia plus test cassette (CE0197)

For the qualitative detection of *Chlamydia trachomatis*

**Sample material:** Cervical swab (females);  
Urethral swab & urine (males)

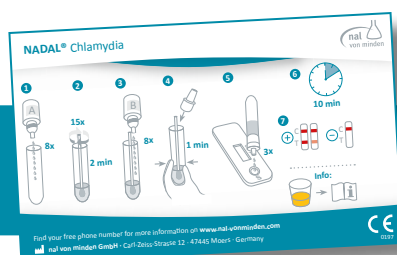
**Test time:** 10 minutes

**Sensitivity (f/m):** 90.2 % / 92.6 %

**Specificity (f/m):** 96.0 % / 95.2 %

**Product code:** 212011

With swab & transport tube



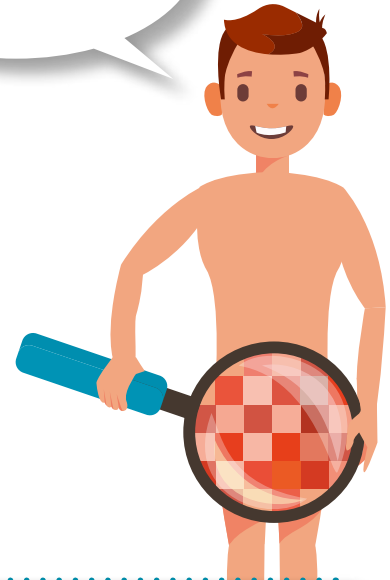
## Chlamydia infection or gonorrhoea?

Which antibiotic treatments are suitable?  
Decision-making support in just 10 minutes!

## Gonorrhoea

The symptoms of gonorrhoea are generally the same as those for chlamydia. However, the two infections need to be treated differently. Whereas a 10-day course of antibiotics is required for a chlamydia infection, a single dose of antibiotics is enough when treating gonorrhoea. Even in the absence of acute symptoms, the CDC recommends that sexually active women, as well as homosexuals and those who have a new sexual partner, should get themselves tested at least once a year.

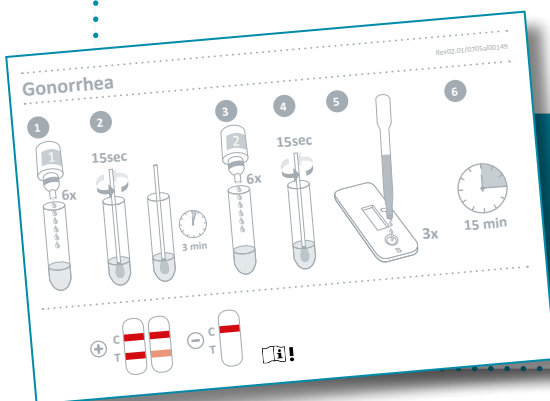
Gonorrhoea –  
colloquially known as 'the Clap'  
– can be quickly and simply handled  
with penicillin.



### NADAL® Gonorrhoea test cassette

For the qualitative detection of gonorrhoea antigens

**Sample material:** Cervical & urethral swab  
**Test time:** 15 minutes  
**Sensitivity:** 92.7 %  
**Specificity:** 96.7 %  
**Product code:** 611005N-10



**Abdominal pain? Fever? Discharge?**  
Avoid potential infertility by getting an early diagnosis!  
Decision-making support in just 15 minutes!

## Hepatitis

The global NOhep movement – which comprises government authorities, doctors and patients – has charged itself with the task of eliminating hepatitis by the year 2030. After all, hepatitis is now very treatable. The challenge lies in getting a diagnosis. Millions of people are unaware that they are living with a potentially deadly liver disease because – as is often the case with hepatitis C –

symptoms only become noticeable decades after contracting the disease. It is for this reason that the World Hepatitis Alliance, which started the NOhep movement and which calls for increased testing, is working under the motto 'Find the missing millions'. nal von minden offers multiple rapid tests for the diagnosis of hepatitis A, B, and C.

## Hepatitis A

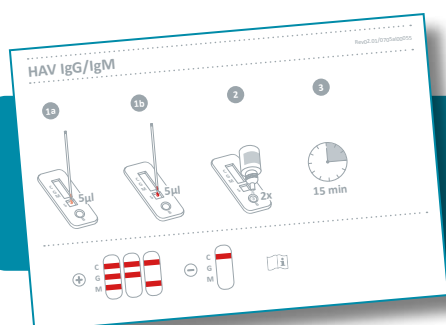
Anti-HAV IgM are detectable before the onset of symptoms, and decrease again after around 3 to 6 months. Anti-HAV IgG appear soon after and remain in the body for years, offering lifelong immunity. Depending on the presence of anti-HAV IgG and anti-HAV IgM, it is possi-

ble to differentiate between past and current infections. With high specificity and sensitivity, the results of a NADAL® HAV IgG/IgM Test can indicate whether you are dealing with an acute infection or a past immunisation.

### NADAL® HAV IgG/IgM test cassette

For the simultaneous detection and differentiation of anti-hepatitis A virus IgG and IgM

**Sample material:** Whole blood, serum, plasma  
**Test time:** 15 minutes  
**Sensitivity:** 94.8 % (IgM) / >99.0 % (IgG)  
**Specificity:** 96.7 % (IgM) / 93.3 % (IgG)  
**Product code:** 622070N-30



**Fatigue, gastrointestinal complaints, or stomach pain following a trip to the tropics?**

**Are you immune to hepatitis A?**

**Answers in just 15 minutes!**

## Hepatitis B

According to the WHO, 2 billion people worldwide are infected with hepatitis B, and almost 1 million people in Germany alone die as a result of the illness. However, 90 % of those with an acute hepatitis B infection will fully recover. For a fast recovery, an early diagnosis is a real

advantage. A further advantage of both INFO® Hepatitis B tests is that they can be carried out using blood obtained directly from the fingertip. The tests enable you to establish whether there is current immunity against hepatitis B.

### INFO® anti-HBs (HBsAb) test cassette (CE1434)

Can be used with blood obtained directly from the fingertip  
For the qualitative detection of hepatitis B antibodies (HBsAB)

**Sample material:** Whole blood, serum, plasma  
**Test time:** 15 minutes  
**Sensitivity:** 100 %  
**Specificity:** 100 %  
**Product code:** 622091



### INFO® HBsAg test cassette (CE1434)

Can be used with blood obtained directly from the fingertip  
For the qualitative detection of hepatitis B surface antigens (HBsAg)

**Sample material:** Whole blood, serum, plasma  
**Test time:** 15 minutes  
**Sensitivity:** 100 %  
**Specificity:** 99.9 %  
**Product code:** 622093



Direct detection of  
hepatitis B!

Elevated liver function readings?

Raised GPT (glutamic oxaloacetic transaminase) levels?

HBV infection? Chronic or acute? Decision-making support in just 15 minutes!

## Hepatitis C

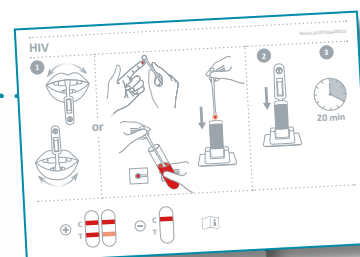
This virus has earned the nickname 'the silent epidemic'. Approximately 75 % of all cases show no symptoms. It is common for the hepatitis C virus to make itself known decades later, by which time serious liver damage has already occurred. In 15 to 40 percent of all those affected, the course of infection goes completely unnoticed. However, if treatment with medication is necessary, pa-

tients can be virus-free after only two to three months in more than 95 % of cases. An early test is therefore recommended – a negative result for anti-HCV rules out an infection in the last three months. The benefit of the OraQuick® test is that it can be carried out non-invasively using saliva.

### OraQuick® HCV test cassette (CE0543)

Can be carried out using saliva  
For the qualitative detection of IgG antibodies (anti-HCV) against the hepatitis C virus

**Sample material:** Oral fluid, whole blood, serum, plasma  
**Test time:** 20 minutes  
**Sensitivity:** 98.1 % - 99.9 %  
**Specificity:** 99.6 % - 99.9 %  
**Product code:** 622021



### INFO® anti-HCV (HCVab) test cassette (CE1434)

Can be used with blood obtained directly from the fingertip  
For the qualitative detection of antibodies against the hepatitis C virus

**Sample material:** Whole blood, serum, plasma  
**Test time:** 15 minutes  
**Sensitivity:** 100 %  
**Specificity:** 100 %  
**Product code:** 622094



**Increased tiredness? Pain in the upper stomach?**

**Struggling to be productive?**

**Ensure the best possible treatment by getting an early diagnosis!**

**Decision-making support in 15-20 minutes!**

## HIV

Many patients flinch at the idea of a HIV test – often from fear of the results. An early diagnosis and subsequent treatment can enable a good quality of life and prevent unwitting transmission of the infection to others. A HIV rapid test spares patients a long wait and provides the first indication of a possible infection. Testing is not just recommended for those who have been exposed to HIV

– patients with trichomoniasis should also regularly undergo HIV tests, as they are at a much higher risk of infection due to symptomatic lesions. Additionally, syphilis also occurs as a so-called coinfection with HIV. As a result of immune suppression, testing several parameters together using a rapid test is recommended.

### OraQuick ADVANCE® HIV-1/2 (Ab) test cassette (CE0543)

Can be carried out using saliva samples

For the qualitative detection of antibodies against HIV-1 and HIV-2

<b>Sample material:</b>	Oral fluid, whole blood, plasma
<b>Test time:</b>	20 minutes
<b>Sensitivity:</b>	100 %
<b>Specificity:</b>	99.8 %
<b>Product code:</b>	452008



### INFO® anti-HIV 1/2 test cassette (CE1434)

Can be carried out using blood obtained directly from the fingertip

For the qualitative detection of antibodies against HIV-1 and HIV-2

<b>Sample material:</b>	Whole blood, serum, plasma
<b>Test time:</b>	15 minutes
<b>Sensitivity:</b>	100 %
<b>Specificity:</b>	100 %
<b>Product code:</b>	452031



**One in seven of those infected are unaware that they are HIV positive**

**An early diagnosis can reduce the infection rate by up to 95 percent!**

**Decision-making support in 15-20 minutes!**

## Herpes

Herpes is a lifelong infection. Once contracted, only the symptoms can be treated. Depending on the type of HSV virus, complaints can take the form of blisters or pustules in the mouth and/or upper lip (HSV-1) or in the genital area (HSV-2 and increasingly HSV-1). Whether chronic or acute, both manifestations can be detected within 10 minutes using the corresponding NADAL® rapid test.



### NADAL® HSV 1 IgG/IgM test cassette

For the simultaneous detection and differentiation of anti-Herpes simplex virus 1 IgG and IgM

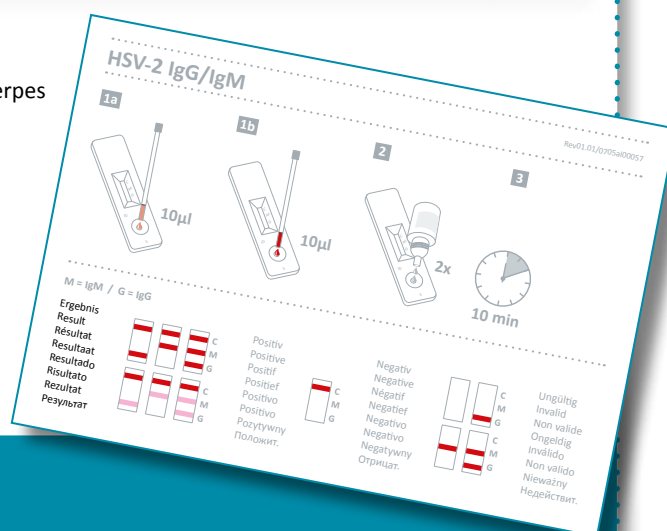
**Sample material:** Whole blood, serum, plasma  
**Test time:** 10 minutes  
**Sensitivity:** 90.6 %  
**Specificity:** 91.4 %  
**Product code:** 1130004N-10



### NADAL® HSV 2 IgG/IgM test cassette

For the simultaneous detection and differentiation of anti-Herpes simplex virus 2 IgG and IgM

**Sample material:** Whole blood, serum, plasma  
**Test time:** 10 minutes  
**Sensitivity:** 93.8 %  
**Specificity:** 96 %  
**Product code:** 1130005N-10



**Itching but no blisters (yet)**

**– suspected herpes?**

**Primary or chronic infection?**

**Decision-making in just 10 minutes!**

## Mycoplasma

The NADAL® Mycoplasma Test is based on the cultivation of bacteria and biochemical reactions. Each test plate contains 30 wells split into 3 sections: Bacterial culture and determination of the pathogen (*M. hominis*/*U. urealyticum*) estimate of the pathogen count as well as resistance testing with 11 antibiotics in several different

concentrations. If the mycoplasma are sensitive to an antibiotic, the activity of the enzyme responsible for the increase in pH in the medium is inhibited. As a result, the pH indicator does not change colour. Furthermore, the additional testing of antibiotic resistance can ensure that the most effective antibiotic is identified immediately.

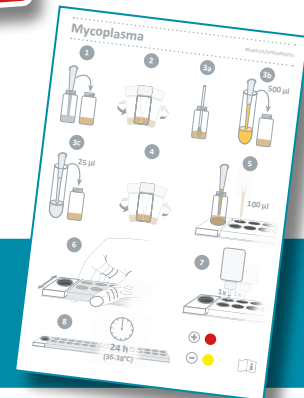
With  
sensitivity test for  
antibiotics

### NADAL® Mycoplasma test plate

For the detection of *Mycoplasma hominis* and *Mycoplasma urealyticum*

**Test time:** 24 - 48 h  
**Sensitivity:** >99 %  
**Specificity:** 97.8 %  
**Product code:** 1770001

Problems in the genital area but chlamydia and gonorrhoea tests were negative? A mycoplasma infection could be to blame. Test directly in your practice!



## pH level

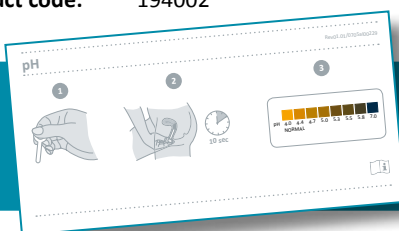
The use of antibiotics, tampons not changed often enough, sperm, mechanical contraception, diets or aggressive soaps – there are many things which can influence the vagina and damage pH levels. In 1 mm<sup>3</sup> of vaginal epithelium, there are usually around 2 billion useful lactobacilli present.

If the diversity of these bacteria changes or their number decreases, the natural protection they provide also decreases. For this reason, a regular check of vaginal pH is recommended, especially in pregnancy, during which time levels should be checked at least once a week.

### NADAL® pH Test

For the measurement of pH levels in vaginal secretion

**Test time:** 10 seconds  
**Sensitivity:** >99 %  
**Specificity:** 86.4 %  
**Product code:** 194002



Issues in the genital area?  
Perhaps the vaginal pH is out of balance?  
Checking it over takes just 10 seconds!



Syphilis is highly infectious:  
Even one bacteria is sufficient  
for transmission.  
Best protection? Safer sex!

## Syphilis

A syphilis infection is often diagnosed with the help of a VDRL (Venereal Disease Research Laboratory) test, which detects anti-lipoidal antibodies. These can occur not only with syphilis infections, but also with pregnancy, liver diseases or with so-called collagenosis. The NADAL® Syphilis Test, which specifically detects antibodies against the syphilis pathogen *Treponema pallidum*, delivers fast and concrete results.

### NADAL® Syphilis test strip

Can be carried out using blood obtained directly from the fingertip  
For the qualitative detection of IgM and IgG antibodies against *Treponema pallidum*

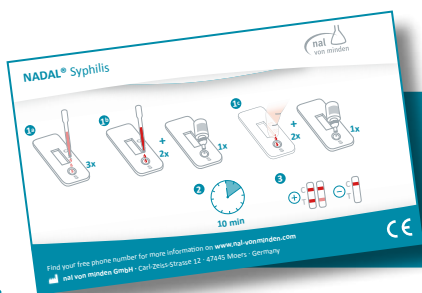
- Sample material:** Whole blood, serum, plasma
- Test time:** 10 minutes
- Sensitivity:** 99.6 %
- Specificity:** 99.1 %
- Product code:** 203001 (Alternative: 203901N-40)



### NADAL® Syphilis test cassette

Can be carried out using blood obtained directly from the fingertip  
For the qualitative detection of IgM and IgG antibodies against *Treponema pallidum*

- Sample material:** Whole blood, serum, plasma
- Test time:** 10 minutes
- Sensitivity:** 99.6 %
- Specificity:** 99.1 %
- Product code:** 203002 (Alternative: 203902N-20)



Rash, fever and even hair loss –  
could it be syphilis?

Secure the best possible treatment for your patients through a  
clear diagnosis! Decision-making support in just 10 minutes!

## Trichomoniasis

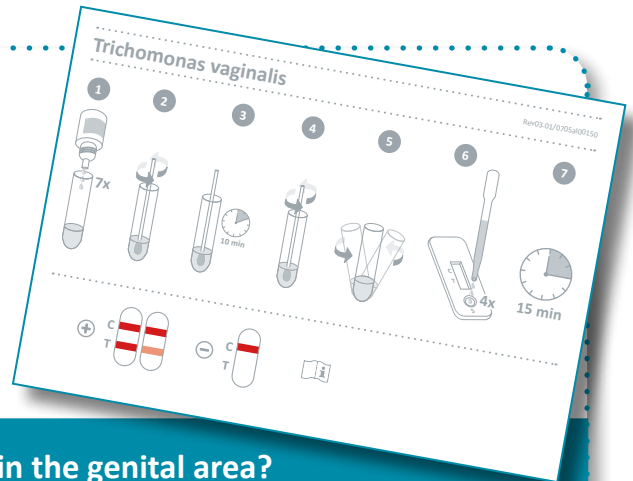
Trichomoniasis is a condition that often goes unnoticed. If left untreated, the infection can cause inflammation which can in turn lead to infertility. Signs such as unusual discharge or itching could be an indication of trichomoniasis

and should be taken seriously. The NADAL® *Trichomonas vaginalis* rapid test can be carried out using vaginal secretion as a sample material, and enables a fast and clear distinction from other urogenital infections.

### NADAL® *Trichomonas vaginalis* test cassette

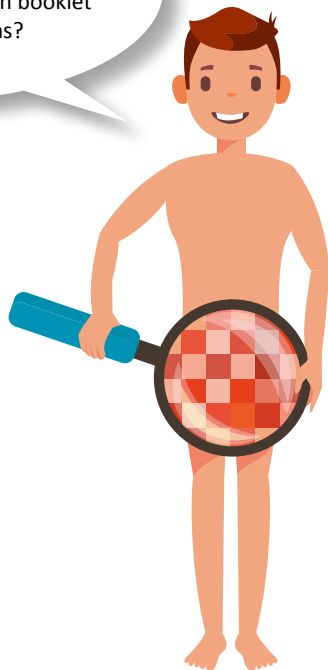
For the qualitative detection of *Trichomonas vaginalis*

**Sample material:** Vaginal secretion  
**Test time:** 15 minutes  
**Sensitivity:** 91.3 %  
**Specificity:** 97.3 %  
**Product code:** 840003N-10



**Discharge, itching and other complaints in the genital area?**  
 Clear differentiation from other urogenital infections in just 15 minutes!

Sexual health can often be an uncomfortable topic - why not use our STI patient information booklet during consultations?



**Request your personal offer by fax now: 0800 5892023**

### Overview of featured articles

Alongside the products outlined below, our range consists of an extensive choice of other rapid tests in a variety of pack sizes, as well as practical devices for the automatic evaluation of tests. Request your customised offer or further information now! Your customer adviser will be happy to help you.

Contact us directly via telephone on 0941 29010-0 or by email: [vertrieb@nal-vonminden.de](mailto:vertrieb@nal-vonminden.de)

Product	Sample material	Test time	Product code	Pack size	Request offer – please tick and enter number of tests required
NADAL® Chlamydia test cassette (CE0197)	Cervical swab (females) Urethral swab & urine (males)	10 min	212007	20	<input type="checkbox"/> _____
NADAL® Chlamydia plus test cassette (CE0197)	Cervical swab (females) Urethral swab & urine (males)	10 min	212011	20	<input type="checkbox"/> _____
NADAL® Gonorrhea test cassette	Cervical & urethral swab	15 min	611005N-10	10	<input type="checkbox"/> _____
NADAL® HAV IgG/IgM test cassette	Whole blood, serum, plasma	15 min	622070N-30	30	<input type="checkbox"/> _____
INFO® anti-HBs (HBsAb) test cassette (CE1434)	Whole blood, serum, plasma	15 min	622091	40	<input type="checkbox"/> _____
INFO® HBsAg test cassette (CE1434)	Whole blood, serum, plasma	15 min	622093	40	<input type="checkbox"/> _____
OraQuick® HCV test cassette (CE0543)	Oral fluid, whole blood, serum, plasma	20 min	622021	25	<input type="checkbox"/> _____
INFO® anti-HCV (HCVab) test cassette (CE1434)	Whole blood, serum, plasma	15 min	622094	40	<input type="checkbox"/> _____
INFO® anti-HIV 1/2 test cassette (CE1434)	Whole blood, serum, plasma	15 min	452031	40	<input type="checkbox"/> _____
OraQuick ADVANCE® HIV-1/2 (Ab) test cassette (CE0543)	Oral fluid, whole blood, plasma	20 min	452008	25	<input type="checkbox"/> _____
NADAL® HSV 1 IgG/IgM test cassette	Whole blood, serum, plasma	10 min	1130004N-10	10	<input type="checkbox"/> _____
NADAL® HSV 2 IgG/IgM test cassette	Whole blood, serum, plasma	10 min	1130005N-10	10	<input type="checkbox"/> _____
NADAL® Mycoplasma test plate	Endocervical swab, urethral swab, midstream urine samples, seminal fluid	24-48 h	1770001	20	<input type="checkbox"/> _____
NADAL® pH Test	Vaginal secretion	10 sec	194002	50	<input type="checkbox"/> _____
NADAL® Syphilis test strip	Whole blood, serum, plasma	10 min	203001	40	<input type="checkbox"/> _____
NADAL® Syphilis test cassette	Whole blood, serum, plasma	10 min	203002	20	<input type="checkbox"/> _____
NADAL® Syphilis test cassette	Whole blood, serum, plasma	10 min	203902N-20	20	<input type="checkbox"/> _____
NADAL® Syphilis test strip	Whole blood, serum, plasma	10 min	203901N-40	40	<input type="checkbox"/> _____
NADAL® Trichomonas vaginalis test cassette	Vaginal secretion	15 min	840003N-10	10	<input type="checkbox"/> _____

**Please send me an offer for the tests selected:**

**Practice name** \_\_\_\_\_

**Address** \_\_\_\_\_

**Contact name** \_\_\_\_\_ **Telephone** \_\_\_\_\_

**Date** \_\_\_\_\_ **Signature** \_\_\_\_\_

**Please send further information on:**

- Point-of-care testing brochure
- NADAL® catalogue – medical rapid tests



# NADAL® medical rapid tests

## For just about every requirement

- ✓ Autoimmune diseases
- ✓ Bacteriology
- ✓ Cardiology
- ✓ Gynaecology & obstetrics
- ✓ Infectious diseases
- ✓ Oncology
- ✓ Paediatrics
- ✓ Parasitology
- ✓ Tropical medicine
- ✓ Sexually transmitted infections
- ✓ Urology



Our sales team would be happy to answer any questions you may have by telephone on: 0941 - 29010 0 or by fax: 0941 - 29010 50 and by email: [vertrieb@nal-vonminden.de](mailto:vertrieb@nal-vonminden.de)

We help you care!

