

BioPanda

Fluorescence
Immunoassay
Device
For Point-of-Care
Testing

Designed for Healthcare Professionals





Biopanda

Part 1: The
Biopanda FIA
Device



Summary

- ▶ **BR-FIA-2000:**
Portable fluorescence immunoassay device
 - ▶ Fast, accurate quantitative and qualitative POCT results
 - ▶ Supports point-of-care settings





Technical Overview

- ▶ Europium-based fluorescence immunoassay technology
 - ▶ Read time <20 seconds; memory for 10,000 results
 - ▶ Ports: LAN, USB-A, USB-C; Built-in thermal printer
 - ▶ Compact, 1 kg handheld design



Test Menu Overview

- ▶ **Biopanda FIA test range:**
 - ▶ Inflammation and infection markers
 - ▶ Cardiac and tumour markers
 - ▶ Endocrinology, diabetes, nephrology
 - ▶ Autoimmunity and infectious disease tests



A blue ballpoint pen with a silver tip is positioned diagonally across the left side of the slide. The background behind the pen is a light blue bar chart with several bars of varying heights. The overall design features green and blue geometric shapes on the left and right sides of the slide.

Why FIA for POCT?

- ▶ Higher sensitivity than standard lateral flow
 - ▶ Quantitative markers for improved clinical decisions
 - ▶ Fast results improve workflow efficiency
 - ▶ Supports evidence-based patient management



GP and Doctor's Clinics

- ▶ Rapid CRP/PCT for antimicrobial decisions
 - ▶ Supports triage and chronic disease management
 - ▶ Improves diagnostic confidence at first consultation
- ▶ D-dimer FIA tests
 - ▶ Supports fast diagnose for DVT & pulmonary embolism



Pharmacies

- ▶ Walk-in infectious disease screening
 - ▶ Strep A FIA testing
 - ▶ Respiratory infections: Influenza and COVID.
 - ▶ Expands clinical service offerings for pharmacies.
 - ▶ Other tests: Vitamin D



Nursing Homes / Long-Term Care

- ▶ On-site monitoring of infection and inflammation
 - ▶ Enables early intervention
 - ▶ Diabetes monitoring:
 - ▶ HbA1c, C-peptide, Insulin
 - ▶ Supports care home clinical governance



Remote & Rural Clinics

- ▶ Portable system for outreach teams
 - ▶ Ideal where laboratory access is limited
 - ▶ Monitoring of cardiac health with quantitative data
 - ▶ Troponin I & T (Myocardial injury)
 - ▶ hs-CRP (Myocardial injury)
 - ▶ NT-proBNP (heart failure)





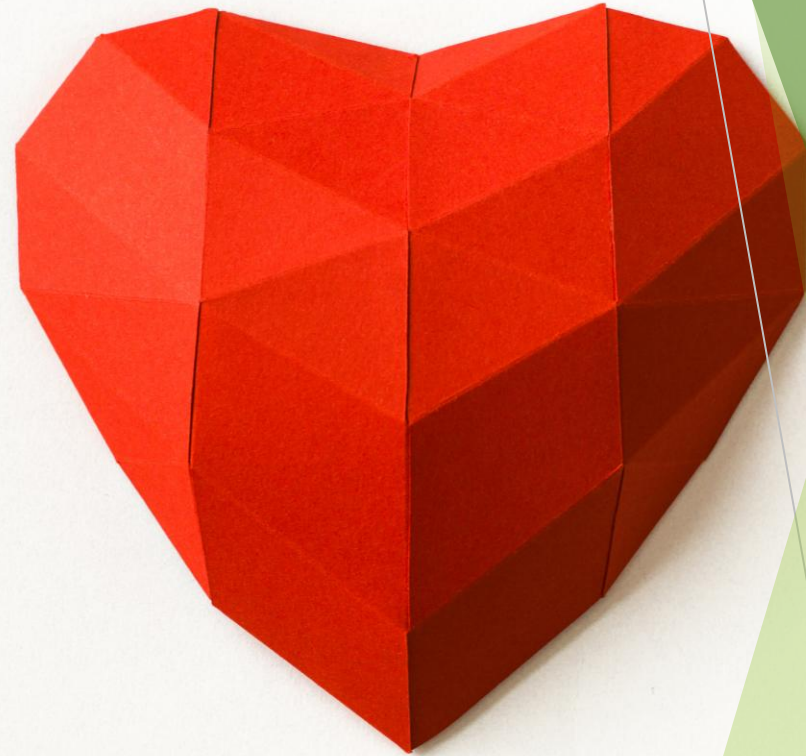
Other Healthcare Providers

- ▶ Occupational health testing
 - ▶ Emergency services triage with rapid biomarkers
 - ▶ Decentralized clinical trial sample evaluation



Cardiac Markers

- Cardiac Troponin I FIA Rapid Test Device
- Cardiac Troponin T FIA Rapid Test Device
- High Sensitivity Cardiac Troponin T FIA Rapid Test Device
- CK-MB FIA Rapid Test Device
- H-FABP FIA Rapid Test Device
- Myoglobin FIA Rapid Test Device
- NT-proBNP FIA Rapid Test Device
- High-Sensitivity NT-proBNP FIA Rapid Test Device
- PLAC FIA Rapid Test Device
- CTNI/Myo/CK-MB FIA Rapid Test Device
- CTNI/NT-proBNP/D-dimer FIA Rapid Test Device
- D-dimer FIA Rapid Test Device



Inflammation



- CRP FIA Rapid Test Device
- IL-6 FIA Rapid Test Device
- PCT FIA Rapid Test Device
- SAA FIA Rapid Test Device





Video Training for CRP FIA Test



- ▶ Training videos available
- ▶ QR code printed on box labels allows for end user training.



Tumour Markers

- AFP FIA Rapid Test Device
- CA 125 FIA Rapid Test Device
- CA 15-3 FIA Rapid Test Device
- CA 19-9 FIA Rapid Test Device
- CEA FIA Rapid Test Device
- CYFRA21-1 FIA Rapid Test Device
- FOB FIA Rapid Test Device
- PSA FIA Rapid Test Device
- Free PSA FIA Rapid Test Device



Endocrinology

- AMH FIA Rapid Test Device
- B-HCG FIA Rapid Test Device
- C-Peptide FIA Rapid Test Device
- Cortisol FIA Rapid Test Device
- Ferritin FIA Rapid Test Device
- FSH FIA Rapid Test Device
- HbA1c FIA Rapid Test Device
- Insulin FIA Rapid Test Device
- LH FIA Rapid Test Device
- Progesterone FIA Rapid Test Device
- Prolactin FIA Rapid Test Device
- T3 FIA Rapid Test Device
- FT3 FIA Rapid Test Device
- T4 FIA Rapid Test Device
- FT4 FIA Rapid Test Device
- Testosterone FIA Rapid Test Device
- TSH FIA Rapid Test Device



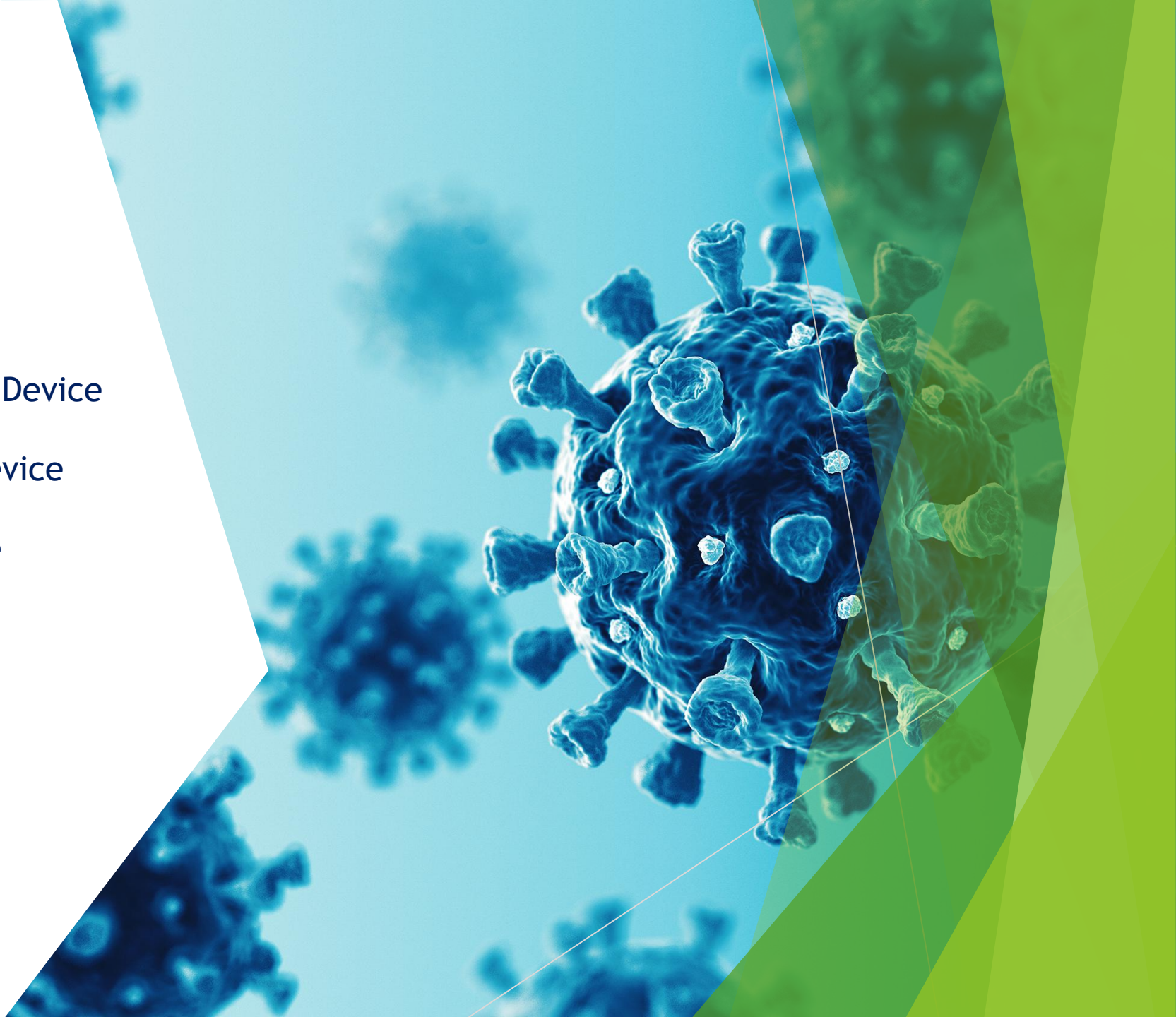
Nephrology

- ❑ B2-MG FIA Rapid Test Device
- ❑ Cys-C FIA Rapid Test Device
- ❑ mAlb FIA Rapid Test Device



Infectious Disease

- ASO FIA Rapid Test Device
- COVID Ag FIA Rapid Test Device
- COVID/FLU A+B Ag FIA Rapid Test Device
- Dengue IgG/IgM FIA Rapid Test Device
- Dengue NS1 FIA Rapid Test Device
- H. Pylori Ag FIA Rapid Test Device
- HBsAg FIA Rapid Test Device
- HBsAb FIA Rapid Test Device
- HCV Ab FIA Rapid Test Device
- HIV 1.2 Ab FIA Rapid Test Device



Infectious Disease

- HIV P24 Ag FIA Rapid Test Device
- Influenza A+B FIA Rapid Test Device
- L. pneumophila Ag FIA Rapid Test Device
- Malaria P.f./P.v./Pan FIA Rapid Test Device
- Rotavirus FIA Rapid Test Device
- RSV FIA Rapid Test Device
- Strep A FIA Rapid Test Device
- Typhoid Ab FIA Rapid Test Device





Autoimmunity

- IgE FIA Rapid Test Device
- IgA FIA Rapid Test Device
- Rheumatoid Factor FIA Rapid Test Device





Other Tests

- ❑ Calprotectin FIA Rapid Test Device
- ❑ Vitamin D FIA Rapid Test Device
- ❑ Folate FIA Rapid Test Device
- ❑ Vitamin B12 FIA Rapid Test Device





Healthcare Impact

- ▶ Fast diagnosis → better outcomes
 - ▶ Reduces unnecessary referrals and hospitalisations
 - ▶ Creates additional revenue pathways for clinics
 - ▶ Single platform reduces equipment overhead





Implementation Considerations

- ▶ Staff training on workflow and interpretation
 - ▶ Establish QC and routine maintenance procedures
 - ▶ Plan test kit supply and storage
 - ▶ Optional LIS/EHR integration





BioPanda

Part 2:
Operational
details



Operating Requirements

- ▶ Temperature: 10-30° C;
Humidity ≤ 85%
- ▶ Avoid dust, direct sunlight, vibration, electromagnetic interference
- ▶ Indoor use only with stable power supply





Quality Control

- ▶ QC required before first use, after transport, after downtime, and every 3 months
 - ▶ QC Card provided with device
 - ▶ Automated pass/fail QC cassette system
 - ▶ If QC fails repeatedly: discontinue use and contact support





Testing Workflow

- ▶ Quick Test Mode: incubate externally and insert cassette for reading
- ▶ Standard Test Mode: incubation and reading inside device
- ▶ Automatic cassette ejection and optional auto-printing





Data & User Management

- ▶ 10,000-result memory capacity
 - ▶ Supports USB export, LAN, and LIS integration
 - ▶ Admin and sub-user accounts supported





Safety & Cleaning

- ▶ Professional use only; PPE required when handling samples
 - ▶ Clean with 70% ethanol only (no bleach)
 - ▶ Disconnect power before cleaning; avoid liquid ingress



Troubleshooting

- ▶ Most issues solved by restarting the device
 - ▶ Common faults: mechanical errors, cassette errors
 - ▶ Software updates can be administered remotely
 - ▶ Persistent errors require manufacturer support.
 - ▶ Biopanda staff will be able to advise and solve any queries.



Warranty

- ▶ 12-month warranty for defects in materials or workmanship
 - ▶ Does not cover misuse, unauthorised repair, or non-Biopanda consumables



Summary & Closing

- ▶ BR-FIA-2000 delivers rapid, accurate POCT
 - ▶ Wide test menu supports diverse clinical needs
 - ▶ Ideal for clinics, pharmacies, nursing homes, and remote care
 - ▶ Q&A